

# Accessories

## Mounting accessories

### Z 119.041



#### Features

- Easy and cost-effective mounting
- For applications with high acceleration

#### Description

Push encoder onto drive shaft. Insert torque pin that is radially fixed at the encoder flange into the torque support (provided by customer).

#### Part number

Z 119.041 Torque support by rubber buffer element for encoders with 15 mm pin

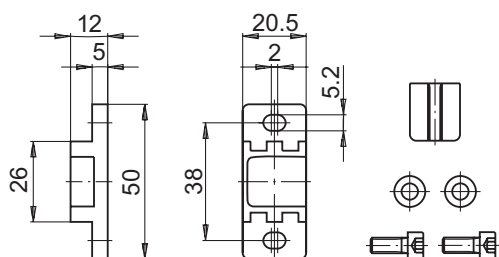
#### Scope of delivery

Included: Torque support, rubber buffer, 2 screws M5 x 12 with two stay washers

#### Suitable for

G0333 , G0A2H, G0AMH, G0L2H, G0LMH, G0M2H, G0MMH, G0P5H, G110H, G110S, G1M2H, G1MMH, G2M2H, G2MMH, GBA2H, GBA2S, GBAMH, GBAMS, GBMMH, GBMMS, GBP5H, GE333, GEMMH, GI330 , GI331 , GI332 , GI333 , GXA2S, GXAMS, GXL2S, GXLMS, GXM2S, GXM7S, GXMMS, GXN1H, GXP1H, GXP5S, GXP6H, RXA1H

#### Dimensions



#### Dimension

