

# Accessories

## Mounting accessories

### Z 119.040



#### Features

- Easy mounting in confined a place since no radial space required
- For applications with minimized space consumption

#### Description

Use either rubber buffer Z 119.036 or Z 119.037 according to encoder model. Fix shoulder screw onto the mounting surface. Push encoder onto the drive shaft and position the shoulder screw in the encoder's rubber buffer.

#### Part number

Z 119.040 Shoulder screw M5 as torque support

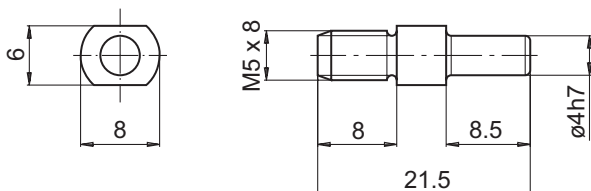
#### Scope of delivery

Included: Shoulder screw M5

#### Suitable for

G1M2H, G1MMH, G2M2H, G2MMH, GI341, GI342, GXN1H, GXP1H, GXP6H, RXA1H

#### Dimensions



#### Dimension

